

Historic, archived document

Do not assume content reflects current scientific knowledge, policies, or practices.

1925

LIBRARY
RECEIVED
JUN 24 1929
U.S. Dept. of Agriculture



SPRING CATALOGUE

NINETEEN TWENTY-FIVE

The Goodhold Floral Gardens Company

GROWERS OF

New and Standard Gladioli
Perennial Plants

Mentor

- - -

Ohio

1925
text
rep.
Feb 20



INTRODUCTION



Present you, this, the new sales book of The Goodhold Floral Gardens Co., for the year 1925. At the beginning of our sixth year in business, we observe with pleasure the long list of those we have served, and we expect to give even better service this year.

It has always been our policy to supply our customers with the best stock it is possible to grow. The continued and rapidly growing patronage we have received, convinces us that our policy is appreciated.

We thank you for the business of the past and we will at all times strive to so serve you, that your dealings with us will be satisfactory and pleasant.

A Word About Ourselves

Goodhold Floral Gardens are located at Mentor, in northeastern Ohio, on the main highway between Cleveland and Buffalo. In this location we have everything favorable to the production of strong, healthy plants and bulbs.

On our large acreage can be found every kind of soil, from light sand and rich black muck to heavy clay. With this wide variation of soil, we can grow a particular crop on land best adapted to it, resulting in superior stock.

In this northern latitude, nothing but the hardest plants can survive our severe Winters. As this page is being written, the ground is covered with a thick blanket of snow and ice, with the mercury standing at 15 degrees below zero. "Goodhold" grown plants must be hardy to withstand such conditions.

All the bulbs and plants listed are grown here at "Goodhold" and are backed by our guarantee.

How to Order

Please do not send currency with your orders. It is not safe. Send all remittances in bank drafts, post office or express money orders or by check.

No matter how often you have dealt with us, please write your name and address plainly. It will save delay and mistakes.

All prices quoted in this catalog are prepaid unless otherwise noted.

Please send remittances in full with all orders. Should you desire to have the stock sent C. O. D. 25 per cent of the amount must accompany the order.

GUARANTEE We guarantee all stock purchased from us to reach the purchaser in good condition. Any bulb or plant purchased from us, which does not prove true to label, will be replaced free of cost or the purchase price refunded. As the growth of a plant depends altogether upon growing conditions over which we have no control, we cannot guarantee growth or be responsible for stock, after delivery to our customers in good condition.

Write Us Your Problems

In our organization are men who have devoted their entire lives to the culture of plants and flowers. Part of their duties is to help solve your gardening problems. Write for their advice on any question you may have. The benefit of their years of experience is yours for the asking.

Yours for a successful garden.

THE GOODHOLD FLORAL GARDENS
COMPANY, Mentor, Ohio.



Acres of Gladioli at Goodhold Gardens.

Gladioli

Ruffled Varieties

ADELINE KENT. Delicate light rose-pink, heavily ruffled edges to center. Orchid coloring ranging from flesh to new rose on the outer edges. Throat straw color with ruby dashes. This is one of the most beautiful ruffled Gladioli in existence. The flowers are large and appear on fine long spikes. **\$1.00 each; \$10.00 per doz.**

ALTON. A beautifully ruffled orange, blending lighter in the throat with deeper blotches on the lower petals. **50c each; \$5.00 per doz.**

AMERICAN INDIAN. A large self colored, velvety red, colored slightly deeper in the throat and lower petals. One of the best of the reds and a fine variety for cutting. **25c each; \$2.50 per doz.; \$17.00 per 100.**

ANTHONY B. KUNDERD. A grand tall growing, heavily ruffled variety. In color it is a dainty deep cream, overlaid with blush pink. Lower petals primrose edged with pink. **75c each; \$7.50 per doz.**

AVALON. An exceptionally large blush white, borne on a strong spike; flowers deeply ruffled, handsome rose colored throat, lower petals marked with cream and blotched with crimson. **20c each; \$2.00 per doz.**

AZALEA. A very pretty ruffled white, much resembling the flowers of the Ghent Azalea. Strong 30-inch spike with many compact flowers open at a time; fine for cutting. **30c each; \$3.00 per doz.**

BONNY. Lavender tinted pink, with old rose edge. A handsome flower in an unusual color. **20c each; \$2.00 per doz.**

BUCKEYE. Giant flowers of rose-pink with old rose edging, large rose-red throat. **30c each; \$3.00 per doz.**

CINNAMON BEAR. Deep violet-red, deeper throat; a finely ruffled self color. **20c each; \$2.00 per doz.**

CRESCENT QUEEN. Very large; dark wine-red. A beautiful variety of this color. **20c each; \$2.00 per doz.**

DREAM. Large, massive bloom. Deep salmon-red. Large very showy blotches. Extra grand. **35c each; \$3.50 per doz.**

ELEGANCE. This is a tall growing variety of a beautiful soft yellow, heavily ruffled. A grand one of this color and should be included in every planting. **50c each; \$5.00 per doz.**

E. J. SHAYLOR. In our estimation E. J. Shaylor is one of the most satisfactory varieties we grow. Large blooms of a handsome, pure rose-pink, borne on a slender, wiry stem. Was awarded a Certificate of Merit by Royal Horticultural Society of England in 1920. **15c each; \$1.50 per doz.; \$10.00 per 100.**

FAIRLAND. Produces a tall spike of large, well expanded flowers. Vermilion shading lighter toward the center. Throat and lower petals beautifully blotched. **25c each; \$2.50 per doz.; \$15.00 per 100.**

GLORIOUS. Soft cream color with a deep cream-apricot throat. Extra fine blooms on a long spike. **30c each; \$3.00 per doz.**

GOLDEN GLORY. A prominent member of the "Glory" group. Heavily ruffled, rich golden yellow with a brilliant ruby blotch on each of the lower petals. **25c each; \$2.50 per doz.**

GYPSIE QUEEN. Handsome flowers of orange-red faintly edged with blue. A very attractive bloom. **25c each; \$2.50 per doz.**

INDIANAPOLIS. A good deep purple, beautiful and well ruffled. Petals slightly marked with narrow white lines, throat deeper purple. A tall growing sort: fine for cutting. **25c each; \$2.50 per doz.; \$17.00 per 100.**

RUFFLED GLADIOLI—Continued

INDIAN SUMMER. The "mammoth beauty" Indian Summer is one of the largest, strongest and to our minds one of the most beautiful of all the Gladioli. It is impossible for us to do it justice in a word description. It must be seen to be appreciated. In color it is a rich lavender-pink on a white ground, deeply ruffled. Grows to an enormous size making a mammoth spike with many flowers open at one time. Very distinct and showy. Indian Summer belongs in the late flowering group and to be fully enjoyed should be planted as early as is safe. Stock limited. Each \$10.00.

IVORY. Ivory white with slight markings in the throat. Very heavily ruffled. 20c each; \$2.00 per doz.; \$15.00 per 100.

JOE COLEMAN. A rank growing rich red, shading darker toward the outer edges. Flowers open wide, many open at once, faint dull markings on the lower petals. Extra good for cut flowers. 15c each; \$1.50 per doz.; \$10.00 per 100.

JUNE DELIGHT. Deep geranium red, well ruffled. A very early bloomer making it a profitable variety to grow for early cutting. 15c each; \$1.50 per doz.; \$10.00 per 100.

KASSON. A good sized lavender rose-pink. Blooms finely ruffled. 20c each; \$2.00 per doz.; \$14.00 per 100.

KUNDERD GLORY. Handsome creamy apricot, shading to tints of light pink, with markings of red on the lower petals. By high cultivation, it is possible to grow flower spikes over 5 feet tall. 10c each; 85c per doz.; \$6.00 per 100.

LA VANGE. White, shading to deep pink in the throat. A fine tall growing, showy variety. 20c each; \$2.00 per doz.; \$15.00 per 100.

LITTLE DIAMOND. Rich salmon-pink flaked with deeper salmon, shading into a beautiful flaked and penciled throat. Good color and handsomely ruffled. 15c each; \$1.50 per doz.; \$10.00 per 100.

MONA LISA. This is almost a pure self colored, soft pale rose-pink or bluish white. Makes a tall spike carrying a load of flowers. A very dainty variety especially well adapted to florists' use. 15c each; \$1.50 per doz.; \$10.00 per 100.

NAMPA. A large white bloom with finely ruffled edges. 20c each; \$2.00 per doz.; \$14.00 per 100.

ORANGE GLORY. A beautiful, clear distinct orange, finely marked in the throat with dainty white lines. A rank, healthy grower but under ordinary conditions makes only a medium height. Extra large well opened flowers, borne on a strong stem, extra good for bedding or mass planting. 10c each; \$1.00 per doz.; \$7.00 per 100.

ORAN. Blush white, a little darker shade than America. Throat handsomely penciled rose and white. 20c each; \$2.00 per doz.; \$14.00 per 100.

PINK LILY. A delicate shade of rose-pink beautifully ruffled. A distinct feature of the flower is that the color shows clear through, backs of the petals are solid rose-pink. It is a valuable variety for the florist. Long 40-inch spikes. 25c each; \$2.50 per doz.; \$16.00 per 100.

PRESIDENT MENOCAL. Very tall, large flower, yellow ground bordered with pink, brightly marked, throat blotched with red. 25c each; \$2.50 per doz.; \$17.00 per 100.

PRIDE OF GOSHEN. A mammoth, strong growing, ruffled, salmon- or flesh-pink. Big wavy blooms, on a tall strong stem. Attractive. 10c each; 85c per doz.; \$6.00 per 100.

PRIDE OF LANCASTER. Another ruffled beauty in a bright orange salmon, lower petals blotched with deep orange red, fiery orange throat. Spike 20 to 25 inches. 20c each; \$2.00 per doz.; \$14.00 per 100.

PURPLE GLORY. One of Kunderd's most famous introductions. The giant of Gladioli. Rich, deep, velvety, maroon red with almost black blotches. Flowers large, of good substance and beautifully ruffled. The past season Purple Glory attracted more attention than any other variety we grew. No other variety even approaches it in loveliness of flower and richness of color. 50c each; \$5.00 per doz.; \$35.00 per 100.

RED, WHITE AND GOLD. This is another tall growing, handsome member of the ruffled group. Upper petals are white, lower petals golden yellow edged with deep red, finely ruffled. Strong sturdy spikes, just right for cutting. 20c each; \$2.00 per doz.; \$14.00 per 100.

REMEMBRANCE. A long spike with many flowers open at a time. Deep salmon rose-pink, with beautifully blotched throat. 25c each; \$2.50 per doz.; \$17.00 per 100.

ROSE GLORY. One of the best sorts of this color that we grow. A heavily ruffled rose-pink shading to a deeper throat. Fine for cutting. 20c each; \$2.00 per doz.; \$14.00 per 100.

SCARLANO. A warm orange red, large, ruffled. A beautiful shade of red and one of the best in this color. 20c each; \$2.00 per doz.; \$14.00 per 100.

SNOW GLORY. Pure snow-white with three faint iris-blue lines in the lower petals; if cut in bud these lines do not appear. Extra large, ruffled flowers. \$2.00 each; \$20.00 per doz.

SPLENDORA. Splendid, very dark wine-black. A fine, rich, distinct sort. 15c each; \$1.50 per doz.

SUMMER BLOSSOM. Medium sized flowers of fine rose, ruffled and almost solid in color, slightly marked with red. 15c each; \$1.50 per doz.; \$10.00 per 100.



Gladiolus Ivory.

RUFFLED GLADIOLI—Continued

THISTLE. Handsome coral rose petals, the lower ones darker. Heavily ruffled. 30c each; \$3.00 per doz.; \$20.00 per 100.

VENTURA. A very early ruffled white. Pure white with a handsome barred throat. 20c each; \$2.00 per doz.; \$14.00 per 100.

VIOLET BEAUTY. Cerise-violet ruffled, lower petals buff-white blotched with crimson. Throat beautifully blotched with red. 15c each; \$1.50 per doz.; \$10.00 per 100.

VIOLET GLORY. A self colored deep violet maroon, with deeper throat. Giant flower medium ruffled. 15c each; \$1.50 per doz.

WHITE BELLE. Tall, strong growing, bluish white, beautiful throat. One of the heaviest ruffled in the entire list. 15c each; \$1.50 per doz.; \$10.00 per 100.

WHITE DELIGHT. A beautifully blotched, soft flesh white creamy throat, prettily blotched. 15c each; \$1.50 per doz.; \$10.00 per 100.

WHITE GLORY. A wonderful pure white marked with delicate iris-blue lines. Resembles in color combination, a beautiful iris. Well ruffled. 20c each; \$2.00 per doz.; \$12.00 per 100.

WHITE KING. An excellent wide open ruffled bloom. Cream white, lower petals nicely blotched, faint markings in the throat. 15c each; \$1.50 per doz.; \$10.00 per 100.

WHITE IVORY. An improvement on "Ivory." Snow-white ground, small blotches of red on lower petals. Intensely ruffled and extra good. 15c each; \$1.50 per doz.

YOUPELL'S FAVORITE. Selected by Henry Youell when secretary of the American Gladiolus Society as his favorite of the ruffled Glads. Giant flower and plant, self colored lavender pink. Very showy and fine. 15c each; \$1.50 per doz.

RUFFLED MIXTURE. This is a mixture we make ourselves from our large stock of named varieties and gives you one of the best mixtures it is possible to obtain. Nothing but ruffled varieties go into this mixture and we see to it that there is a wide range of color. 85c per doz.; \$5.00 per 100.

Goodhold "Glorious" Collection of Ruffled Gladioli

For Gladiolus lovers who are undecided what to select but want an assortment of the best, we have made up this collection of ruffled beauties. It is composed of our leading varieties in a wide range of color. This collection will make a great show and give you some of the best varieties grown today. These collections are made up before we receive your order and for that reason we can make no change in varieties. One large sized bulb of each of the following, postpaid to your door for \$1.50.



Rose Glory Gladiolus.

E. J. SHAYLOR	\$0.15
JUNE DELIGHT15
GOLDEN GLORY25
LITTLE DIAMOND15
ORANGE GLORY10
PINK LILY25
PRIDE OF GOSHEN...	.10
PRES. MENOCAI25
ROSE GLORY20
SCARLANO20
VIOLET BEAUTY15
WHITE GLORY20
	\$2.15

All Postpaid
for
\$1.50

Pleased With Goodhold Gladioli

Your box of Orange Glory reached me O. K. They are splendid. I am well pleased.
WM. SANDROCK,
Minnesota.

Yours of the 19th received, also package. Bulbs were O. K., glad to get them. It has been a pleasure to deal with you. I assure you. I can still use a few more Dorrit.

H. A. ALLEN,
Massachusetts.

Only growers who have grown the "Kunderd" or ruffled type of Gladioli, can appreciate the marked improvement that has recently been made in these popular flowers. The chief characteristic of the ruffled class, is the wonderful ruffling or wavy effect in the petals. They are unusually beautiful and distinct from all other types.

Large Plain Petaled Gladioli

The majority of the varieties in this class are from the same rare strain as the "Ruffled" sorts, but do not have the ruffled petals. This new strain produces larger flowers, more of them, and choicer colors than the older sorts. With few exceptions they are rank, robust growers, succeeding in almost any location and with reasonable care, can be grown by anyone to perfection.

ABERDEEN. A dainty pink tinted lavender. Good stem, large flower, fine for cutting. 10c each; \$1.00 per doz.; \$7.00 per 100.

ADRIATIC. An odd and handsome color combination. A mottled and speckled wine-blue. Throat blue and red. 20c each; \$2.00 per doz.; \$14.00 per 100.

ADORA. An extra fine creamy white with soft pink lines on a primrose throat. A few spikes of Adora make a stunning bouquet. 15c each; \$1.50 per doz.; \$10.00 per 100.

ALHAMBRA. A large flowered, brilliant vermilion-scarlet, with slight penciling on the lower petal. Almost a solid color. 20c each; \$2.00 per doz.; \$12.00 per 100.

ALSHIRA. Introduced by Kunderd in 1921. A tall, showy dark wine-red, with coal-black throat. Flowers large and attractive. 20c each; \$2.00 per doz.; \$12.00 per 100.

AMERICANUS. A good white flushed with delicate pink. 20c each; \$2.00 per doz.; \$12.00 per 100.

AMERICA. Lavender-pink; an extra-large flower and one of the most desirable varieties for cutting. 5c each; 50c per doz.; \$4.00 per 100.

ARIZONA ROSE. A strong grower. Deep rose shading lighter toward the throat, lower petals slightly blotched with scarlet. Produces a strong stem with several large flowers, of good substance, open at a time. 15c each; \$1.25 per doz.; \$8.00 per 100.

ATLANTIC. A good grower under all conditions. It is of a soft salmon shade, delicately marked with a white line on each petal. Spikes are long bearing large flowers. A good cut flower variety. 20c each; \$2.00 per doz.; \$10.00 per 100.

ATHERTON. Deep salmon-rose. Petals clearly blue bordered. A beautiful variety. 20c each; \$2.00 per doz.; \$12.00 per 100.

BARON HULOT. Possibly the most famous of the blue Gladioli. Flowers quite large and have distinct shades of royal violet-blue. 15c each; \$1.50 per doz.

BILLY RED. Much like "Gov. Hanley," but taller and larger blooms. Tall, fine, splendid deep red. 10c each; \$1.00 per doz.; \$6.00 per 100.

BLACK PANSY. Richest dark red with handsome pansy-like throat. Very attractive. 10c each; \$1.00 per doz.

BLUE ISLE. An unusual blue. Fine big flowers of lilac blue, blotched with red. 15c each; \$1.50 per doz.

BRIGHT RED. A good bright vermilion red. A self color. Makes a medium compact growth. Fine for mass planting. 10c each; \$1.00 per doz.; \$7.00 per 100.

CAIRO. Extra long spikes of clear red, white lines extend through center of each petal. Very good. 15c each; \$1.25 per doz.; \$8.00 per 100.

CHALLENGER.

Velvety, rich, dark blood red. A mammoth flower in a solid color. Strong spike 30 to 40 inches long, bearing many open flowers. Blooms of good substance and a strong grower. 15c each; \$1.50 per doz.; \$10.00 per 100.

CHARLIE KOHLER.

A very showy, tall, mammoth flower of flaming scarlet. A self color. 10c each; \$1.00 per doz.

CHEER.

Big bright salmon-red flowers on a long spike. Throat white with fine white lines running out on each petal. 15c each; \$1.50 per doz.

CHERRY KING.

Large, glowing cherry-red, with darker throat. Blooms of lily-like form, very showy. 10c each; \$1.00 per doz.; \$6.00 per 100.

CONSPICUA.

Light blue with a conspicuous yellow spot; edges of petals marked with a deep blue rim. 10c each; \$1.00 per doz.; \$7.00 per 100.

COPRE.

Mammoth deep vermilion-pink. Large bloom, yet graceful; unusual, distinct coloring and beautiful. 20c each; \$2.00 per doz.; \$14.00 per 100.

CORUNNA.

An unusually large flower with wide spreading petals of light brick red. Throat coal black bordered with white. 20c each; \$2.00 per doz.



Cheer Gladiolus.

Dear Sirs: Please find check enclosed for amount due you. The plants were very satisfactory.

C _____ A _____
Michigan.

LARGE PLAIN PETALED GLADIOLI—Continued

DEFIANCE. Large massive blooms of a delicate blush white with a blush throat. Extra fine for cutting. Grows tall and has many open flowers at a time. We consider it superior to Peace for commercial use. 20c each; \$2.00 per doz.; \$12.00 per 100.

DORRIT. A valuable lavender variety. Makes a tall perfect spike. Large refined lavender flowers, many open at a time. Extra good for commercial growers. 20c each; \$2.00 per doz.

EARLY BLACK. An extra early ruby red, flaked deeper. Throat mottled white. Tall and slender, neat and graceful. 5c each; 50c per doz.; \$4.00 per 100.

EARLY PENDLETON. Very similar to Mrs. Frank Pendleton but is much earlier and has more blooms open at a time. Flowers are well placed on graceful spikes. 15c each; \$1.50 per doz.; \$10.00 per 100.

ELATE. Brilliant red, throat feathered and barred with yellow and white. Makes a tall plant with long ribbon-like drooping foliage. 15c each; \$1.50 per doz.; \$10.00 per 100.

EL CAPITAN. Soft sulphur-yellow flowers upon a tall spike. Lower petals slightly marked. Many open at a time. 25c each; \$2.50 per doz.

EPHEUS. Giant flowers of deep rose-pink, deeper at the edges of the petals, lower petals faintly penciled with red. 20c each; \$2.00 per doz.; \$12.00 per 100.

ESTA. A tall clear white. One of the best for commercial cutting. 15c each; \$1.50 per doz.

EVELYN KIRTLAND. Rosy pink, with brilliant scarlet blotches on the lower petals, making a beautiful color combination; large, wide-open blooms on a splendid long spike. 10c each; 85c per doz.

FAIR COLUMBIAN. This is another giant flowered sort. Fine, large showy lilac-pink flowers with a deeper throat. A strong grower. 15c each; \$1.50 per doz.; \$10.00 per 100.

FAIRFIELD. A tall and vigorous dark maroon. Symmetrical flower. 15c each; \$1.50 per doz.

FIRE RIBBON. A tall growing fire red, many blooms open at a time and all show color when first flower opens. A fine variety for the florist. An exceptionally rich showy flower. 15c each; \$1.50 per doz.

FLAMING VALE. A giant deep cardinal red, throat a little deeper. Very tall with long spikes. An extra good self color. 20c each; \$2.00 per doz.; \$14.00 per 100.

FORMOSA. Handsome shade of blue blotched with vivid red. 10c each; \$1.00 per doz.

GAIETY. Bright salmon-scarlet flaked with deeper red especially on the lower petals. Throat and bases of petals pure white penciled with crimson. A very attractive flower, particularly good for cutting. 10c each; \$1.00 per doz.; \$6.00 per 100.

GIANT FAWN. Extra large, deep fawn yellow, bordered with faint blush pink. A handsome pastel color, beautifully marked with a red line in the throat. 15c each; \$1.50 per doz.

GIANT SALMON. An extra tall growing sort, with light salmon colored blooms. 15c each; \$1.50 per doz.

GOLD THROAT. A strong yellow throat on a bright blood red background. 15c each; \$1.50 per doz.

GOLDEN BUFF. Yellow buff with yellow lower petals. Distinct and good. 20c each; \$2.00 per doz.

GOV. HANLEY. A superfine rich cardinal red, blending deeper toward the throat. Rich velvety texture. Can not be beat for bedding or cut-flower purposes. 10c each; \$1.00 per doz.; \$6.00 per 100.

GRETCHEN ZANG. Soft pink, deepening to salmon on the lower petals; an extra fine variety for cutting because of the long spikes. 10c each; \$1.00 per doz.; \$6.00 per 100.

HALLEY. Salmon-pink, with light creamy blotch. One of the earliest blooming of the large-flowering sorts and therefore profitable for cutting. 5c each; 50c per doz.

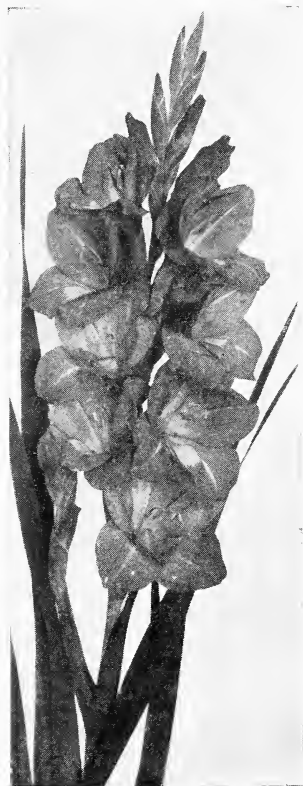
HELGA. Coral rose with deeper rose and tints of cream on a white ground. An exceptionally graceful spike, a lovely flower and extra early. 10c each; \$1.00 per doz.; \$7.00 per 100.

HERADA. Pure mauve and a most striking and stately flower. A color that is not often found in the Gladioli. 10c each; \$1.00 per doz.; \$5.00 per 100.

HERNDON. Fine flesh-white, deeper in the throat. Semi-ruffled. 10c each; \$1.00 per doz.; \$7.00 per 100.

IDA VAN. An extraordinary deep salmon-red or glowing orange-pink. Throws a strong spike with wide open triangular flowers, many open at a time. Won highest award and certificate of merit at Cleveland. 5c each; 50c per doz.; \$3.50 per 100.

INDIANOLA. An extra good salmon rose pink. 15c each; \$1.50 per doz.; \$9.00 per 100.



Ida Van Gladiolus.

LARGE PLAIN PETALED GLADIOLI—Continued



Mrs. Frank Pendleton.

JACK LONDON (Diener). Light salmon with brilliant orange flame, golden yellow throat with ruby striped center. 15c each; \$1.50 per doz.; \$8.00 per 100.

KILIMA. Tall slender plant. Beautiful creamy salmon blush, extra good for cutting. 15c each; \$1.50 per doz.

LARGE BUFF. A fine shade of soft buff, sometimes blushed. Throat penciled with rose. Very beautiful. 10c each; 85c per doz.

LAVENDER AMERICA. This is of a deeper pink than America and has more of a lavender tint. Tall and stately, fine for cutting. 20c each; \$2.00 per doz.

LE MARECHAL FOCH. Delicate pink, enormous wide open flowers, nearly as early as "Halley." An excellent grower, blooms from every bulb, a good florist's variety. 10c each; 85c per doz.; \$6.00 per 100.

LILAC UNIQUE. Large flowers of deep lilac, flecked with violet throat deeper in color. 30c each; \$3.00 per doz.

LILY BLOTCH. A very showy salmon-red with a conspicuous blotch in the throat reminding one of a choice Pelargonium. 15c each; \$1.25 per doz.; \$8.50 per 100.

LILY WHITE. One of the best whites in existence and one that is appreciated by the florist. Makes a large pure white flower, early and a good grower. 10c each; 85c per doz.; \$6.00 per 100.

LUSTRE. Tall dark vermilion - crimson, blended markings of deeper color in the throat, speckled with white in the center. A beautiful stately flower. 10c each; 85c per doz.; \$6.00 per 100.

MARSHALL FOCH (Kunderd). Finest salmon-pink, extra large blossoms on a tall, strong spike. 25c each; \$2.50 per doz.

MARY FENNEL. A very attractive lavender, shading lighter toward the throat. Soft primrose-yellow throat. A pleasing combination of lavender and cream. 15c each; \$1.50 per doz.

MARBLE BARRED. Tall, very large flower, beautifully striped on white ground. Throat beautifully stippled and flaked. An extra choice variegated variety. 15c each; \$1.50 per doz.

MARY PICKFORD. An extra good medium-sized flower of creamy white. Throat is of the softest sulphur-yellow. The shapely flowers are arranged in twos, the entire length of spike. Bracts and buds are of a greenish white tone, which suits the variety well. England thought so well of this variety that its Royal Horticultural Society awarded it a Certificate of Merit when it was exhibited in London in 1920. 15c each; \$1.50 per doz.; \$8.00 per 100.

MASTER WIETZE. Dark maroon, overlaid with violet; spikes tall and extra strong. 10c each; 85c per doz.; \$5.00 per 100.

MATTHEW CRAWFORD. This is the result of a straight cross between Kunderd Glory and America. It is a giant, showy, creamy pink. 30c each; \$3.00 per doz.; \$20.00 per 100.

MENLO. Orange-vermilion shaded deeper on the lower petals. A real beauty. 20c each; \$2.00 per doz.

MISS U. S. A. Dainty blush white. Very refined and beautiful. 20c each; \$2.00 per doz.

MR. MARK. Light blue shading to deeper blue. Dark spot on lower petals. 20c each; \$2.00 per doz.

MRS. A. E. KUNDERD. Large flowered, perfectly formed white, with faint tint of blush pink. A tall-growing, magnificent white. 10c each; \$1.00 per doz.; \$7.00 per 100.

MRS. ARTHUR MEEKER. Almost a self-color of American Beauty. Produces a long spike, with flowers three inches across. 25c each; \$2.50 per doz.

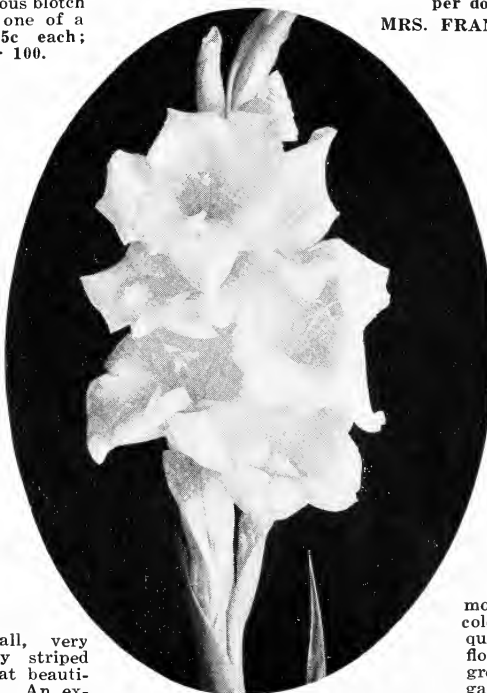
MRS. DR. NORTON. Finest combination of cream and pink. One of the most popular varieties and admired by all. 20c each; \$2.00 per doz.

MRS. FRANK PENDLETON. One of the most popular of all the Glads. Bright rose-pink on a white ground, with a mammoth blotch of rich carmine-red on the lower petals. This variety has demanded attention wherever exhibited and has received numerous awards of merit both at home and abroad. 10c each; \$1.00 per doz.; \$5.00 per 100.

MRS. FRANCIS KING. Salmon-pink, mottled with darker shades of the same color. Flowers are exceptionally large and heavy, and it will be of distinct advantage to provide stakes for the long spikes. 10c each; \$1.00 per doz.; \$5.00 per 100.

MRS. WM. KENT. Colors ranging from rose to shrimp pink, overlaid and striped with deeper rose - pink. Throat straw color

mottled with ruby. The color of this variety is exquisite and suitable for cut flowers. It is of very rapid growth and a heavy propagator. Flowers are large and spikes very tall. 20c each; \$2.00 per doz.



Mary Pickford Gladiolus.

LARGE PLAIN PETALED GLADIOLI—Continued

MURIEL. Pale violet blue, orchid blue with purplish blue blotch on lower petals; large open flowers and very well built spike. A distinctive and fine variety. 25c each; \$2.50 per doz.

MYRTLE (K). Delicate rose-pink, wonderfully dainty, a sensation among Gladiolus lovers as the finest flower of this shade. 15c each; \$1.50 per doz.

NOXALL. A massive pure white with beautiful pink throat. 20c each; \$2.00 per doz.

OLD SMOKY. A good novelty. An odd smoky color, flaked with dull blue. Throat wine-red. Makes a long spike. 15c each; \$1.50 per doz.; \$10.00 per 100.

ORPHEUM. Deep rose; self-colored with a deeper throat. 15c each; \$1.50 per doz.

PANTHEON. A large massive waxy white, on a tall, strong plant. Lower petals feathered and penciled with rose. Very attractive. 20c each; \$2.00 per doz.; \$12.00 per 100.

PAR EXCEL. Deep salmon-pink, throat blotched with maroon, similar in marking to a Pelargonium bloom. Extra fine. Do not fail to make a planting of this. 20c each; \$2.00 per doz.; \$12.00 per 100.

PELLA. An extra early rose-pink, with a good stem. Fine for cutting. 10c each; \$1.00 per doz.; \$7.00 per 100.

PRIMROSE BEAUTY. An extra good primrose-yellow. Flowers extra large, plants tall and sturdy. 10c each; \$1.00 per doz.; \$7.00 per 100.

PYTHIA. A gigantic dark rose-red with massive Amaryllis-like flowers. Lower petals are blotched with red, many flowers open at a time. This is one of the largest flowered varieties we grow. Very showy. 50c each; \$5.00 per doz.

RACINE. A very dark red, flaked deeper; white in the throat. 15c each; \$1.50 per doz.; \$10.00 per 100.

RAJAH. A giant among Glads. A very choice dark red. 50c each; \$5.00 per doz.

RARITY. A beautiful and unusual shade of lavender, tinted with old rose. Good sized flowers on a long spike. 20c each; \$2.00 per doz.; \$14.00 per 100.

RED AMARYLLIS. A mammoth flower of brilliant blood-red on a plant of medium height. A glorious variety that will attract attention anywhere. 20c each; \$2.00 per doz.

RED KNIGHT. A giant flower of deep ox-blood red. One of our favorite reds and should be included in every collection. 20c each; \$2.00 per doz.

RED WING. Fine red, medium-sized flowers on a long spike. Throat beautifully blotched many flowers open at a time. 10c each; \$1.00 per doz.; \$7.00 per 100.

REV. EWBANK. Delicate shade of porcelain-blue, with pronounced red markings in the throat. 25c each; \$2.50 per doz.

ROBERT J. KUNDERD. A mammoth, brilliant self-color, deep vermilion. A gorgeous flower, the best red yet introduced. Fine for mass planting or bedding. 75c each; \$7.00 per doz.

ROMANCE. Large orange salmon, overlaid rose, throat red and yellow. Petals bordered with wine-blue. Very unusual and attractive. 25c each; \$2.50 per doz.; \$15.00 per 100.

1910 ROSE. Purest rose-pink without a touch of purple. Very large flower. Narrow central line of white on lower petals. A favorite among the florists. 10c each; \$1.00 per doz.; \$6.00 per 100.

ROSEBUD. A handsome light pink, slightly ruffled. The opening flower closely resembles a beautiful rosebud, hence the appropriate name. 20c each; \$2.00 per doz.; \$10.00 per 100.

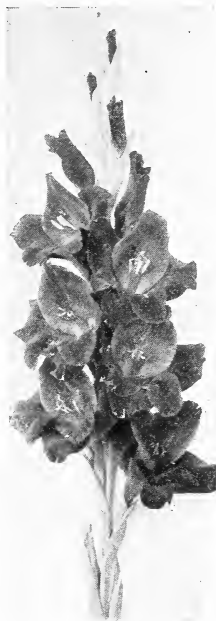
ROSY GLOW. Extra-large blooms; rose-pink on white ground; spikes exceptionally long. 20c each; \$2.00 per doz.

SALMON PLUME. A clear salmon flesh, darker at edges of petals. Throat a handsome red. 15c each; \$1.50 doz.; \$10.00 per 100.

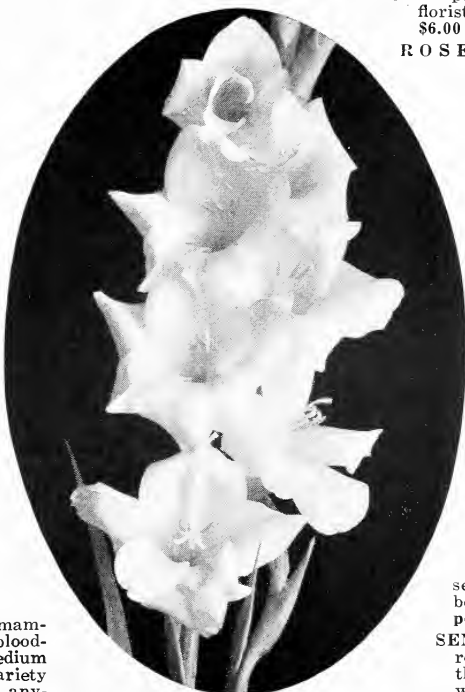
SCHWABEN. Clear sulphur yellow, with small brown spot in the throat. 10c each; \$1.00 per doz.; \$6.00 per 100.

SCARLET PRINCEPS. Six or more "Princes"-like flowers open at a time, with throat a little deeper. Blooms set close together. A massive, beautiful sort. 15c each; \$1.50 per doz.; \$10.00 per 100.

SENTINEL. A tall and strong rose-pink, flaked darker on the edges and blending to a white throat. Very late. 10c each; \$1.00 per doz.; \$7.00 per 100.



Scarlet Princeps.



Pantheon Gladiolus.

LARGE PLAIN PETALED GLADIOLI—Continued

SNOW BOY. Large flowers of finest white, throat marked with bright red blotch. A tall grower, many flowers open at a time. 10c each; \$1.00 per doz.; \$7.00 per 100.

SUMMER BEAUTY. An exceptional pink. A distinct shade of clear salmon, blending to a lighter throat. Fine for cutting. A healthy grower and a good shipper. 10c each; \$1.00 per doz.; \$7.00 per 100.

TARO. Beautiful American Beauty rose color, produces a mammoth flower on a strong spike. Unusually good. 25c each; \$2.50 per doz.

TYRIAN BEAUTY. Elegant, large flowers of Tyrian rose. Good grower, excellent for cutting. 15c each; \$1.50 per doz.; \$10.00 per 100.

UHLAN CHIEF. Tall, graceful, slender spike. Flower of most intense brilliant vermilion-scarlet. Lower petals deeper color and beautiful dark feathered. A magnificent red. 25c each; \$2.50 per doz.; \$15.00 per 100.

ULYSSES. Rose-pink, flaked and mottled with smoky blue. A large and unusual variegated variety. 15c each; 1.50 per doz.; \$10.00 per 100.

UNIQUE. Very tall, large, salmon-pink with dark throat. Distinctive and attractive. 15c each; \$1.50 per doz.; \$10.00 per 100.

VIRGINIA HALE. A soft creamy salmon-rose, petals bordered with deeper shade. Extra good. 40c each; \$4.00 per doz.

VINTON. Deep salmon-pink, blotched with deeper red, bordered with finest yellow. 15c each; \$1.50 per doz.; \$10.00 per 100.

VISTULA. A deep violet-purple, rich in color. Spike tall and graceful. 15c each; \$1.50 per doz.

WAUKEGAN. Large wide open salmon-rose-red. Semi-ruffled, throat barred with white. 15c each; \$1.50 per doz., \$10.00 per 100.

WHITE ORCHID. A large white with upright cup-like flowers. Throat dark red. Tall and showy. 20c each; \$2.00 per doz.; \$15.00 per 100.

WHITE PEARL. An extra good one for the florist. Very long spikes of medium sized white blooms, petals waved. 20c each; \$2.00 per doz.; \$12.00 per 100.

WILBRINCK. A light pink sport from the variety Halley; very early blooms with large flowers on long spike. 10c each; 85c per doz.; \$6.00 per 100.

WINNETKA. White petals with various shades of color in the throat. 15c each; \$1.50 per doz.; \$9.00 per 100.

WILLIS E. FRYER. A massive deep violet. Extra fine with beautiful throat. Good strong grower. 35c each; \$3.50 per doz.

WINEDROP. Dark wine-red with a distinct black throat; blooms are unusually large and showy. 15c each; \$1.50 per doz.; \$9.00 per 100.

YELLOW GEM. A distinctly beautiful shade of yellow, blooms are large and carried on long spikes. 15c each; \$1.50 per doz.; \$10.00 per 100.

YELLOW HAMMER. Pure yellow; an extra large, strong grower. 10c each; 85c per doz.; \$6.00 per 100.

The "Goodhold" Superb Collection of Gladioli

Selected from our large list because of their particularly beautiful colorings and good growing characteristics. This assortment gives you the "pick" of all our plain petaled varieties in a wide range of colors at a big saving in money from the price when ordered separately.

One large bulb each of the varieties **Postpaid**

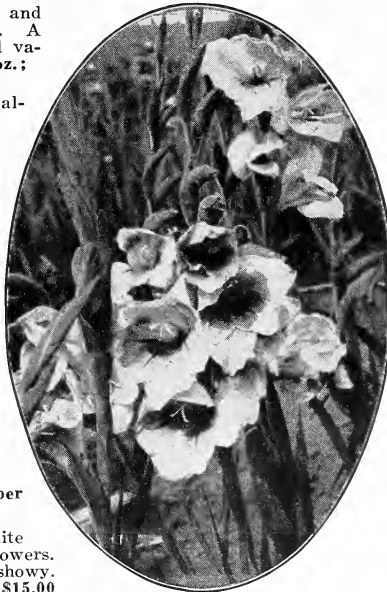
For \$1.00

As this collection is put up in advance do not ask for any change in varieties.

DEFIANCE	\$0.20
ELATE15
ESTA15
FAIR COLUMBIAN20
GAIETY10
GOV. HANLEY10
HELGA10
HERNDON10
IDA VAN05
LE MARECHAL FOCH..	.10
LILY WHITE10
MENLO20
PELLA10
PRIMROSE BEAUTY ..	.15
TYRIAN BEAUTY15

\$1.95

YOU SAVE ON THE **95c**
COLLECTION



Unique Gladiolus.

"Best Ever" Mixture

To be enjoyed to their utmost, Gladioli should also be grown in mass plantings of mixtures. In the "Best Ever" mixture we offer a wonderful assortment of Large Flowered Glads at the price usually asked for ordinary stock. This mixture is made up from our choice named sorts with particular attention being paid to getting a wide range of colors. It contains our choicest varieties in both the ruffled and plain petaled types, kinds never before found in a mixture. 75c per doz., postpaid. By express, not prepaid, \$5.00 per 100; \$35.00 per 1000.

"Lakeside" Mixture

In making this mixture we had in mind the average home-gardener. Where quantities of flowers are desired at a small outlay of money, this mixture enables the flower lover to have large quantities of fine cut flowers all Summer at little expense. By making about three plantings two weeks apart, flowers can be had from early Summer until frost. This assortment contains all the various shades of the large-flowered kinds and a sprinkling of Primulinus Hybrids in all colors. Doz., 50c, postpaid. By express, not prepaid, \$3.00 per 100; \$25.00 per 1000.

Gladioli—Primulinus Hybrids

ALICE TIPLADY. A variety obtained by crossing the Primulinus with Kunderd Yellow. Color a beautiful orange saffron-yellow; blooms quite large. One of the popular "Prims." 10c each; \$1.00 per doz.; \$6.00 per 100.

ARDEN. A large, well-opened flower of a pronounced shade of watermelon-red. Very attractive. 10c each; \$1.00 per doz.; \$6.00 per 100.

ARLON. A wide-petaled, light salmon-colored bloom; throat red with deeper central lines. 10c each; 85c per doz.; \$6.00 per 100.

BOUQUET. Light yellow, with lower petals deeper and beautifully penciled with pink; ruffled. 10c each; \$1.00 per doz.

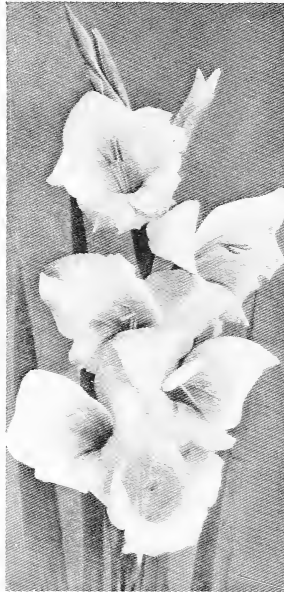
BUTTERFLY. Pale salmon-yellow, ruffled flowers. Obtained by crossing Kunderd Glory. 10c each; 75c per doz.; \$5.00 per 100.

DORIS. Creamy white, with deep canary-colored throat. 10c each; \$1.00 per doz.; \$6.00 per 100.

ENON. Large, deep cream-yellow and orange. Very beautiful. Choice. 15c each; \$1.50 per doz.

FIREFLY. Extra bright, richest deep scarlet. A pure rich self-color. A bed of Firefly in full bloom gives a wealth of color. 15c each; \$1.50 per doz.; \$10.00 per 100.

GOODHOLD BEAUTY. This variety, the result of a cross between a Primulinus Hybrid and one of the large-flowered type, is one of the most striking in appearance of all the "Prims." It has inherited good qualities from both of its parents. A wonderful large flower of brilliant, glowing orange-scarlet, many open at a time. A good keeper when cut, large yet graceful. All visitors to our gardens the past Summer remarked upon its appearance growing in the field. 35c each; \$3.50 per doz.



Salmon Beauty Gladiolus.

GLADNESS. Lavender-rose with deeper shade on the outside and throat penciled with yellow. 10c each; \$1.00 per doz.; \$7.00 per 100.

GOLDEN BUTTERFLY. Canary-yellow color with lower petals deeper yellow and daintily blushed on outside of upper petals. 15c each; \$1.50 per doz.; \$10.00 per 100.

GOLD DROP. An extra large, pure deep yellow, with beautiful markings of red on the petals. Beautifully ruffled. 10c each; 85c per doz.; \$6.00 per 100.

MAIDEN'S BLUSH. Pink, mottled darker, lower petals having tiny crimson blotch on purplish yellow ground. Very early. 15c each; \$1.50 per doz.

MIDSUMMER DREAM. Geranium-red, extra large, showy blooms. 15c each; \$1.50 per doz.

MYRA. A new and giant-flowered Primulinus Hybrid. Deep salmon over yellow ground, tall slender stem, yellow throat with pink lines. Exquisite. 10c each; \$1.00 per doz.; \$7.00 per 100.

NIGHTINGALE. Tall, graceful plant with softest rose-pink blooms. Delicate creamy white, blended with pink in throat. 10c each; \$1.00 per doz.; \$6.00 per 100.

PLANET. Ruffled. Yellow, with lower petals marked with deep yellow lines. 10c each; \$1.00 per doz.

PRIMULINUS SPECIES. Not a variety, but rather a species which is a native of South Africa. Pure yellow color. 10c each; \$1.00 per doz.; \$7.00 per 100.

RIGEL. Soft salmon blush on delicate yellow ground, tall grower. 10c each; \$1.00 per doz.; \$7.00 per 100.

RAMONA. Dainty yellow, with deep golden yellow throat, beautifully ruffled. 15c each; \$1.50 per doz.; \$10.00 per 100.

ROSALIA. Yellow with blushes of orange, lower petals golden yellow; ruffled. 10c each; \$1.00 per doz.; \$7.00 per 100.

SALMON BEAUTY. Deep salmon, with soft salmon-yellow throat. A very large flowered "Prim." and pleasing color combination. A favorite in this class. 15c each; \$1.50 per doz.; \$10.00 per 100.

SIRIUS. Large, dark salmon, rich throat. Fine ruffled Primulinus Hybrid. 10c each; 85c per doz.; \$5.00 per 100.

THOTH. White with canary-yellow throat. Very dainty and attractive. 10c each; \$1.00 per doz.; \$6.00 per 100.

ULRICA. A very large soft salmon, nicely ruffled. Beautiful. 15c each; \$1.50 per doz.

Butterfly Mixture of Primulinus Hybrids

In this mixture we offer as good an assortment, if not the best, that can be found today. It includes all of our choice named varieties, all colors and shapes peculiar to this grand race of Glads. Make a liberal planting of Butterfly Mixture this year and enjoy more and finer cut flowers than you ever had before. You will be delighted with their dainty shades of odd forms of flowers, many of them butterfly-shaped, some hooded and others resembling the Orchid. All are fine. 50c per doz. By express, not prepaid, \$3.50 per 100; \$25.00 per 1000.



Hardy Perennial Plants

Perennials are the easiest and most satisfactory class of plants that the home gardener can grow. Once planted, they will live and increase in beauty year after year. By using a little care in selecting the plants that go into the hardy garden, it is easy to have a wealth of color and an abundance of flowers from early Spring until late Autumn. All the plants we offer are transplanted, field-grown and with ordinary care will bloom the first season.

ACHILLEA - Milfoil or Yarrow

Hardy herbaceous border plants of easy culture. Excellent for bedding and splendid for cutting.

Boule de Niede. Blossoms all Summer. The pure white double flowers are very useful for cutting. July-October.

Filipendula. Finely cut foliage; flower heads of golden yellow. June-September.

Perry's White. The finest and largest flowered Achillea. The very double flowers often reach one inch in diameter. May-September.

Tomentosa (Woolly Yarrow). Dwarf for edging; flat heads of golden flowers and dark green foliage. Does well in dry places. May-August.

AEGOPODIUM - Goat Weed; Bishop's Weed

A rapid-growing, trailing hardy plant, with ornamental foliage.

Podagraria variegata. An attractive variegated form which forms dense mats of white bordered foliage. Blooms white. June-August.

ALYSSUM - Rock Madwort

Dwarf branching plant with small heads of flowers. Fine for the rockery and border.

Saxatile compactum (Basket of Gold). Indispensable for the border. Produces masses of broad heads of yellow flowers in Spring. April.

ANEMONE - Windflower

One of the most gorgeous of the hardy perennials. Blooms freely from August until cut down by frost.

Queen Charlotte. Large lovely flower of daybreak-pink, of great substance and perfect form. Prized for cutting. Fall. 20c each; \$2.00 per doz.

ANTHEMIS

Heavy scented plants with finely cut foliage. Bloom continuous throughout the Summer.

Kelwayi. Deep yellow flowers. 2 feet. June-September.

ANCHUSA - Alkanet

Italica, Dropmore Variety. It is remarkably free-flowering, coming into bloom with or very nearly with Delphinium and covers itself with pretty blue flowers about 1 inch in diameter. Rather rank in growth, attaining a height of 5 to 6 feet. We recommend it very highly. Strong field roots. 20c each; \$2.00 per doz.

AQUILEGIA - Columbine

The distinct, clear-cut foliage and delicate arrangement of colors in the flowers of Columbine make it a showy and desirable hardy garden plant; especially suitable for rockwork. May, June.

Canadensis. The native Columbine, with bright red and yellow flowers.

Cærulea. The dainty Rocky Mountain Columbine; blue and white.

Cærulea rosea. A splendid new variety with flowers of a beautiful rose color.

ARABIS - Rock Cress

Small trailing plants, suitable for the rockery. Extremely early and hardy.

Alpina. Pure white flowers covering the plants in early Spring.

ARMERIA - Thrift

Attractive dwarf plants that will succeed in any soil, forming evergreen tufts of bright green foliage, from which flowers appear in dense heads on stiff, wiry stems about 9 inches high. Very effective in rockery or border. June, July.

Maritima splendens. Bright rosy pink.

Formosa. Flesh to deep rose.

Lauchæana. Bright pink; taller than Formosa.

PRICES for strong plants of all varieties offered on this page unless noted: 15c each; \$1.50 per doz., postpaid. No less than three plants of one variety at dozen rate.

HARDY PERENNIAL PLANTS—Continued.

ASTERS - Michaelmas Daisies

Among the showiest of our late-flowering hardy plants. Most of them are native of the northern and middle states, and will grow freely anywhere.

Japanese, Double. Small white blooms with a brilliant yellow center. As double as Achillea, Boule de Neige. Fine for cutting. 25c each; \$2.50 per doz.

Mauve Cushion. Very dwarf; free blooming. Delicate soft mauve. Extra-fine late-blooming border plant. 25c each; \$2.50 per doz.

Novæ-angliæ. Bright purple; extra large flowers. 4 feet.

Tatarica. Purple; a most showy, large bloom. 4 feet.

White Climax. A free blooming pure white. All Aster plants unless noted: 20c each; \$2.50 per doz.

ARTEMISIA - Mugwort

Aromatic, herbaceous herbs useful in borders for their foliage effects. Small plummy heads of tiny flowers.

Lactiflora. Makes a plant four feet high with many spikes of fragrant flowers and handsome green foliage. 20c each; \$2.00 per doz.

ASCLEPIAS

Very handsome border plants with showy flowers that attract bees and butterflies in large numbers.

Tuberosa (Butterfly Weed). Very showy heads of bright orange flowers, hairy leaves. Does well in dry situations. July-September.

BAPTISIA - False Indigo

An excellent plant for the hardy border, very free grower; they prefer a place fully exposed to the sun.

Australis. Deep indigo-blue, pea-shaped flowers. June.

BOLTONIA - False Chamomile

Large, single, aster-like flowers, in bloom during Summer and Autumn. Its thousands of flowers open at one time, producing a very showy effect. Useful for cutting or for decorations. Aug.

Asteroides. Pure white; very effective. 5 to 7 feet.

Latisquama. Pink, slight-tinged lavender. 4 to 6 feet.

BUDDLEIA - Summer Lilac

Showy herbaceous shrub with fragrant lilac-like panicles.

Variabilis magnifica. A fine new addition to our Summer-flowering shrubs. Blooms in terminal spikes, deep lilac in color, and very fragrant. July to frost. 35c each; \$3.50 per doz.

CAMPANULA - Bellflower

An important and satisfactory class of hardy plants. Easy to grow and add a wealth of color to the garden.

Carpatica (Carpathian Harebell). A pretty compact species, not exceeding 8 inches high. Flowers clear blue, 1 inch in diameter. July. 20c each; \$2.00 per doz.

Medium (Canterbury Bells). Biennials. Bloom in July; height 2 to 3 feet. Three colors, rose, white or blue. 20c each; \$2.00 per doz.

Rapunuloides. Pretty purple flowers borne on erect pyramidal spikes. 20c each; \$2.00 per doz.

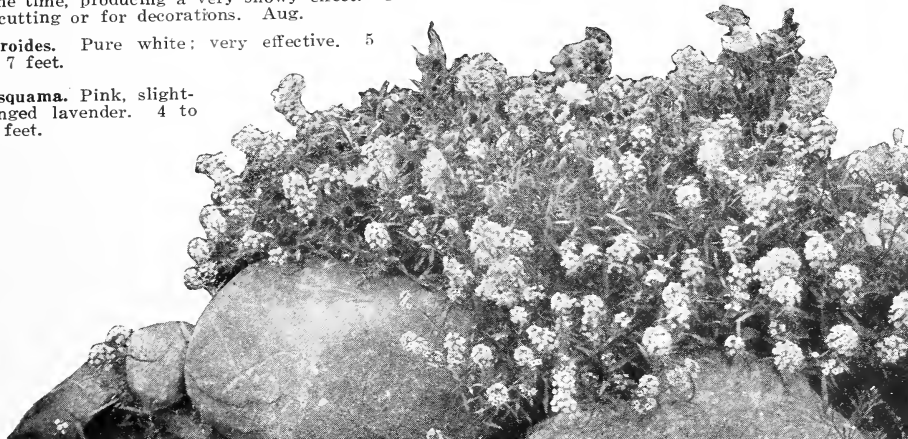
HARDY CHRYSANTHEMUMS

Old-time garden favorites, blooming late in the Autumn when flowers are most appreciated. Every garden should have a collection of all the varieties.

- A. D. Phillips.** Anemone type, pale pink.
 - Boston.** Deep yellow with bronze shadings.
 - Ceddie Mason.** Anemone-shaped blooms, light red, base of petals yellow.
 - Golden Queen.** Clear yellow.
 - Gypsy Queen.** Light vermilion-red, reverse of petals shaded light bronze.
 - Indian.** Brownish red.
 - Marie Antoinette.** Light rose-pink.
 - Pink Pompon.** Rose-pink shading to blush at base of petals. Large pompon type.
 - Red Pompon.** Very deep crimson, late blooming. Small button type.
 - White Flora.** Japanese type, pure white. Free blooming.
 - Yellow Pompon.** Clear lemon-yellow.
- One strong plant of each of the above varieties of Chrysanthemums for \$1.25.

CERASTIUM

Tomentosum (Snow-in-Summer). A low growing rockery or carpet plant, with silvery foliage and white flowers. May-July.



Arabis Alpina.

PRICES for strong field-grown plants of all varieties listed on this page except where otherwise noted: 15c each; \$1.50 per doz. Not less than three of a kind at the dozen rate.

HARDY PERENNIAL PLANTS—Continued.



Shasta Daisy.

CENTAUREA - Bachelor's Button

Valuable plants of easy culture. Good for cutting and deserve a place in every hardy garden. **Macrocephala** (Great Knapweed). Giant heads of rich yellow flowers, prized for cutting and used for a tall border plant. July-August. 20c each; \$2.00 per doz.

Montana (Cornflower). Fine border plant, with large cornflower-blue flowers in August and September. 2 feet. 20c each; \$2.00 per doz.

COREOPSIS - Tickseed

Lanceolata grandiflora. The perfected strain of a long popular hardy plant. Flowers are rich golden yellow, borne in great profusion nearly the entire Summer. June-September.

Verticillata. An old garden favorite. Plant with finely cut, very ornamental foliage, symmetrical as Kochia, 18 inches tall, with yellow flowers, in bloom from June to frost.

DELPHINIUM - Larkspur

Indispensable in the herbaceous garden. Their long, showy spikes of flowers persist from June till frost and furnish the most satisfactory blues to any color scheme.

Belladonna. The freest and most continuous bloomer of all, never being out of flower from the end of June till cut down by frost. Clear, turquoise-blue. When flowers fade the stem should be cut off to insure continuous blooms. Strong field roots.

Bellamosa. This is so superior to *Formosum* that we have dropped the latter. A sport from *Belladonna*, pure dark blue, with all the everblooming qualities of *Belladonna*.

Finest English Seedlings. From English-grown stock seed. From selected named stocks. All will bloom this season. Tall sorts. 25c each; \$2.50 per doz.

DAISY, SHASTA

Plants are extremely productive of bloom, making as profitable cut flower supply as any hardy perennial grown.

Alaska. Large snowy white flowers continually in bloom throughout the Summer and Fall.

DICENTRA - Bleeding Heart

Eximia (Plumy Bleeding-Heart). A dwarf-growing sort, with beautiful finely cut foliage and showy racemes of pretty pink flowers throughout the season. Too much cannot be said for this fine border plant as it is equally at home in full shade or sun and perfectly hardy everywhere. June-September. 20c each; \$2.00 per doz.

ERYNGIUM - Sea Holly

Handsome ornamental plants, 2 to 3 feet tall, with stiff, spiky leaves. Flowers of light blue from July to September. Very useful for dried bouquets.

Planum. Finely cut, stiff, glossy foliage, small flowers of amethyst blue.

EUONYMUS

A fine creeping evergreen vine with small ornamental leaves and fruits. Much used in bedding and for covering banks and walls. Also decorative when used in vases and baskets.

Radicans. The dark glossy green leaved variety. Strong plants. 25c each; \$2.50 per doz.

Variegata. Foliage edged with creamy white. Strong plants. 25c each; \$2.50 per doz.

EUPATORIUM

Very pretty plants for the hardy garden with large flat heads of *Ageratum*-like flowers.

Ageratoides (White Snakeroot). A useful border plant. Dense terminal heads of white flowers. Grows well in shade.

Coelestinum (Mist-flower). Simply covered with blue *ageratum*-like flowers in August and September.

EUPHORBIA - Milkwort; Spurge

Showy plants with continuous bloom.

Corollata. White flowers with small green eye. Used as a decoration with other flowers. July-October.

FESTUCA - Blue Fescue Grass

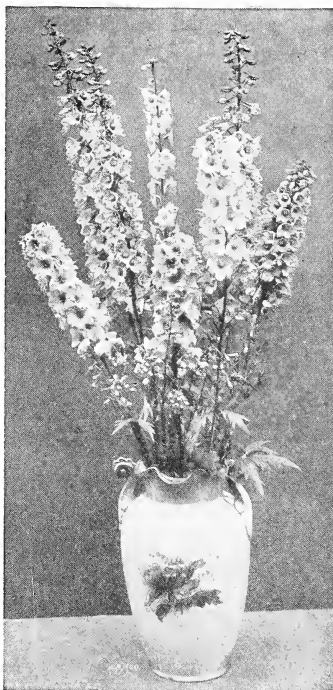
Glauca. 4 to 6 inches. Ornamental grass. Grown for dense tufts of very narrow bluish leaves. Used for edgings or for contrast with darker foliage. Desirable for rock garden.

FUNKIA - Plantain Lily

Much desired for their decorative foliage and lily-like flowers. Unlike most plants Funkias thrive in the shade.

Lanceolata. Deep, glossy green foliage; free blooming; especially useful for shady places. 20c each; \$2.00 per doz.

Subcordata grandiflora. (Day Lily). Pure white, lily-shaped flowers in August. 35c each; \$3.50 per doz.



English Hybrid Delphinium.

PRICES for strong field-grown plants of all varieties listed on this page except where otherwise noted: 15c each; \$1.50 per doz. Not less than three of a kind at the dozen rate.

HARDY PERENNIAL PLANTS—Continued.

GAILLARDIA - Blanket Flower

Make a most gorgeous display. Will thrive in poor soil and a constant show is assured from June until frost.

Grandiflora. Flowers measure 3 inches in diameter, on clean, 2-foot stems. A hard center of deep maroon is thickly bordered by petals of orange and yellow, strikingly ringed by circles of crimson, red, and maroon.

GEUM - Avens

Very popular plants noted for their rich coloring and prolific blooming. An excellent flower for cutting.

Mrs. Bradshaw. An improved variety. Twice the size of the old double scarlet. Frilled petals. May.

HELIOPSIS - Orange Sunflower

Scabra excelsa. A new double-flowering form, growing about 30 inches tall and freely bearing double golden yellow flowers, closely resembling a zinnia. July and August. Fine for cutting. 20c each; \$2.00 per doz.

HIBISCUS - Mallow

Tall shrubby, herbaceous plants, desirable in the garden or border for their decorative foliage and mammoth showy blooms.

Meehan's Marvels. An improvement over the old sorts, attaining larger flowers of richer color. Come in pure white, rose and red. 20c each; \$2.00 per doz.

HOLLYHOCKS

Too well known to require a description. We offer a fine strain.

Allegheny Mixed. Fringed.

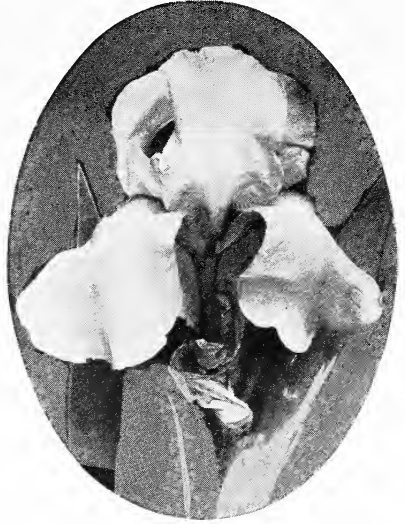
Double Yellow.

Double Red.

Double Maroon.

Double White.

Double Pink.



Iris, Mrs. Alan Gray.

IRIS GERMANICA

All varieties are perfectly hardy, thrive anywhere, grow and bloom luxuriantly. Plants well established produce from 50 to 100 spikes of bloom; some are deliciously fragrant and all are fine for cutting. The colors are wonderful, ranging through richest yellows, intense purples, delicate blues, soft mauves, beautiful claret-red, white, primrose, and bronzes of every imaginable shade.

Field-grown plants, 20c each; \$2.00 per doz., unless otherwise noted.

Caprice. Immense blooms; solid violet-blue.

Fairy. Standards white with midrib of soft green, delicately veined soft blue at the base. Falls creamy white, delicately veined blue at the base.

Germania. A very fine early variety. Falls dark blue, standards light blue.

Honorable. Standards fine yellow, with lower petals of maroon.

Isoline. Standards pale lavender; falls light purple overlaid brown; beard yellow. 25c each; \$2.50 per doz.

Lohengrin. Standards and falls uniform shade of Cattleya rose. Very large. 25c each; \$2.50 per doz.

Mme. Chereau. Very delicate and distinct; white, edged blue.

Mrs. Alan Gray. Uniform delicate pale rose. This Iris often blooms in the Fall. One of the best pinks. 35c each; \$3.50 per doz.

Nibelungen. Standards fawn; falls violet, with fawn margin. A handsome variety. 25c each; \$2.50 per doz.

PRICES for strong field-grown plants of all varieties listed on this page except where otherwise noted; 15c each; \$1.50 per doz. Not less than three of one variety at the dozen rate.



Gaillardia Grandiflora.

HARDY PERENNIAL PLANTS—Continued.

IRIS GERMANICA—Continued

Pallida Dalmatica. The Queen of the German Iris. Immense, clear, light blue flowers. Very rank grower and very fragrant. Undoubtedly the best individual Iris in cultivation. 30c each; \$3.00 per doz.

Parc de Neuilly. Semi-early, large perfectly formed flowers of self-colored deep blue-violet, very clear, pure and beautiful. 35c each; \$3.50 per doz.

Parisiensis. Large, showy, deep purple, delicately penciled white. 20c each; \$2.00 per doz.

Prosper Laugier. Striking and handsome flower, immense in size and of heavy texture. Standards of a beautiful mingling of dark fawn and carmine-violet. Falls deepest carmine-violet, upper part dusky brown on yellowish white. One of the finest. 50c each; \$5.00 per doz.

Princess Victoria Louise. Standards primrose-yellow, falls rich plum with distinct narrow primrose edge. 25c each; \$2.50 per doz.

IRIS KAEMPFERI - Japanese Iris

Japanese Iris prefer a moist, rich soil and to thrive must have frequent and thorough cultivation. Large rich colored blooms through the months of June, July and August.

All varieties, strong field-grown plants. 30c each; \$3.00 per dozen.

Gold Bound. Double pure white, enriched by a creamy glow from the gold banded center.

Kumo-no-Obi (Bank of Cloud). Upper and lower petals nearly equal in size. Bright clear purple, with distinct white rays and halo surrounding the golden throat, standards pure white tipped purple.

Mahogany. Velvet toned deep mahogany red; the erect petaloids prettily crested.

Moniji-no-Taki (Maple Waterfall). A choice variegated, double variety. Bright crimson-purple beautifully feathered in white.

Purple and Gold. Enormous double flowers often ten inches across, early and free blooming. Rich violet-purple with white petaloids, tipped violet.

Uchiu. Beautiful large six-petaled flowers. Color cerulean-blue with golden center and white halo.

Zama-no-Mori. Three immense white falls with strongly marked sky-blue zone in center; standard white, margined soft blue.

LAVANDULA - Sweet Lavender

The Lavender is an old garden favorite because of its pleasant odor. Perennials with silvery gray foliage and spikes of lavender or blue fragrant flowers. Plants should have some protection in the northern states.

Vera. The true sweet Lavender. Fragrant blue flowers in June and July. When cut and dried they retain their original fragrance indefinitely. 20c each; \$2.00 per doz.

LIATRIS - Blazing Star

Liatis produces its flowers in late Summer and Autumn. They will thrive in poorer soil than most plants and are a charming addition to the hardy garden.

Scariosa. Flowers deep purple in an elongated corymb, very ornamental.

LINUM - Perennial Flax

Dainty feathery foliage and bright single flowers all Summer. An ideal plant to use planted liberally among coarser leaved plants. Also good for the rockery.

Grandiflorum rubrum. Waxy bright scarlet flowers borne in great profusion.

LOBELIA - Cardinal Flower

Extremely interesting plants on account of the beauty of their flowers. Of fine handsome appearance, making a great showing when planted in the herbaceous border. Delights in a moist situation.

Cardinalis. Intense cardinal flowers arranged in stocky spikes. Very showy in the hardy border. 1½ feet. August and September. 25c each; \$2.50 per doz.



Japanese Iris.

LYCHNIS - Maltese Cross

Of very easy culture; will thrive anywhere. This, together with their brightness, makes them general favorites in the hardy garden. Of the many varieties offered we consider the one below the best.

Chalcedonica. A most desirable plant; heads of brilliant orange-scarlet. Late June and July. 2 to 3 feet.

MERTENSIA - Blue Bells

Virginica. An early Spring-flowering native with drooping panicles of light blue flowers, fading to clear pink. Well known to most of us who went wild-flowering in childhood along the river-bottoms of the northern and middle states. May and June. 1 to 1½ feet. 20c each; \$2.00 per doz.

PRICES for strong field-grown plants of all varieties listed on this page except where otherwise noted: 15c each; \$1.50 per doz. Not less than three of a kind at the dozen rate.

HARDY PERENNIAL PLANTS—Continued.

MONARDA - Bergamot

Bushy coarse-leaved plant, growing about 2 feet high; covered with round, full heads of flowers with a petalage similar to the Cactus Dahlias. Prized on account of delicious fragrance of leaves when crushed.

Cambridge Scarlet. Showy plants with aromatic foliage, and producing brilliant crimson-scarlet flowers during July and August. 2 to 3 feet. 20c each; \$2.00 per doz.



Oriental Poppies.

NEPETA - Catmint

Pretty trailing or creeping perennials of easy culture but preferring moist places and shade. Useful for ground covering under shrubbery and shady places.

Mussini. An excellent plant for the rock garden. Of dwarf compact growth producing masses of lavender blooms. May-September.

PACHYSANDRA - Japanese Spurge

Broad mats of glossy green leaves and small flowers in May and June. Indispensable as a cover-plant in sun or shade.

Terminalis. The greenish white flowers are borne in spikes. 20c each; \$2.00 per doz.

PAPAVER - Oriental Poppy

The most stately and beautiful of our garden perennials. The flowers are simply enormous, of rich, heavy, satiny texture, borne upon tall hairy stems three feet high. If to be used as a cut flower, the blooms should be cut as soon as the buds begin to show color.

Mrs. Perry. A unique shade of apricot. 25c each; \$2.50 per doz.

PHYSALIS - Chinese Lantern Plant

An interesting plant that has of late years become very popular. Grown for the highly colored decorative fruits which cover the plants in late Summer and Fall. These fruits are 1½ to 2 inches in diameter, coloring up to a brilliant orange when ripe, very much resembling tiny Chinese lanterns. The stems are cut and dried for Winter decorations. **Francheti.** Produce heavy loads of orange-colored fruits.

PHYSOSTEGIA - False Dragonhead

One of the most beautiful of our midsummer flowering perennials forming dense bushes bearing delicate tubular flowers. 2 to 3 feet.

Virginica. Bright but soft pink.

Alba. White; fine for cutting.

PLUMBAGO - Leadwort

Very pretty dwarf perennials that bloom all Summer, thus making them valuable material for the border or rock garden.

Larpenae. Plants 4 to 6 inches high with a profusion of deep violet-blue flowers. 25c each; \$2.50 per doz.

PLATYCODON - Bellflower

Blooms constantly from July until late in September; flowers large, bell-shaped. Of extremely rapid growth, doing well in any soil. Perfectly hardy, making a dense branching bush 2 to 3 feet high.

Azurea. Blue. 20c each; \$2.00 per doz.

Album. Pure white flowers. 20c each; \$2.00 per doz.

POLEMONIUM - Jacob's Ladder

Ceruleum. Flowers bluish purple, small, and of pronounced bell-shape. May and June. 2 feet. 20c each; \$2.00 per doz.

PYRETHRUM

A superb plant for growing in the hardy garden or for cutting. Their pretty fern-like foliage in early Spring followed by a profusion of bright colored daisy-like flowers make them a favorite with all. Extremely hardy and easy to grow.

Roseum (Painted Daisy). Foliage finely cut and attractive; flowers borne profusely on long, straight stems, colored in all shades of rose. A splendid cut flower and conspicuous in the garden. 20c each; \$2.00 per doz.

Uliginosum. Large white flowers, 3 inches or more in diameter, from July to September. 20c each; \$2.00 per doz.

PRICES for strong field-grown plants of all varieties listed on this page, except where otherwise noted: 15c each; \$1.50 per doz. Not less than three of a kind at the dozen rate.

HARDY PERENNIAL PLANTS—Continued.

PHLOX

One of the most attractive of our perennial plants. Its erect stems, topped by great clusters of small flowers, put it in a class by itself.

For border planting, there is nothing to equal the Phlox. Their brilliant blossoms are borne in great profusion and retain their superb colorings for some time, giving color and finish to a mass planting of shrubs and brightening up the duller places.

Strong field plants, 20c each; \$2.00 per doz.

Anna. Large well-formed heads of pure white. Plants rather short in growth.

Athis. Light salmon, violet eye; dark stem. Tall.

Boris. Pink. Large compact flower heads of clearest pink. One of the best of this color.

Curiosity. A real bicolored Phlox, striped, mottled, and variegated. No two florets on the same head are alike. One floret will be all white, the next one half rose and half white, the next one will have alternate petals of white and rose, the next striped white and rose. A novel Phlox and a good bedding variety.

Grideur. Clear light pink with deeper eye. A very showy variety.

Henri Murger. White, with extensive carmine center.

Obergartner Wittig. Bright magenta with light halo and crimson eye. One of the best aureoles.

Rheinlander. A new variety of great beauty; a rare shade of salmon-pink, intensified by a distinct claret-red eye. Flowers and truss of unusual size.

Richard Wallace. Violet-eyed, white.

F. G. Von Lassburg. The largest and purest of all the white Phloxes. Plants attain a height of 2½ feet with massive flower heads. Extra good for bedding purposes.

Widar. Light reddish violet, illuminated by the rather large white center.

Phlox subulata. A dainty creeping Phlox, which is simply covered with flowers in early Spring; splendid for borders or ground covers. 4 inches.

Lilacina. Soft sky-blue, or extremely light lilac.

RUDBECKIA - Coneflower

One of the most attractive of the Autumn-flowering perennials. They are of the easiest culture, perfectly hardy and very free flowering.

Purpurea (Purple Coneflower). Large, drooping petals colored reddish purple, with a remarkably large cone-shaped center of brown, thickly set with golden tips in spiral lines. Excellent for bedding, and equally good for grouping in masses of shrubbery. July to frost. 2 to 3 feet. 20c each; \$2.00 per doz.

The Orange Glory bulbs just arrived and they are certainly a fine lot of bulbs. I shall be glad to give you further orders when in need of more bulbs and will also recommend you to my friends.

M. E. GOWER, ————Mich.

RANUNCULUS - Buttercup; Crowfoot

A well-grown clump of these old favorites is a charming sight. They need a place in the border where they will receive some shade. Also good plants for the rock garden.

Repens fl. pl. Very pretty double yellow flowers on creeping stems. 6 to 12 inches. May-July.



Phlox, F. G. Von Lassburg.

SALVIA - Sage

Perennials with strikingly beautiful orchid-like blooms in the much desired blue. A few cut sprays make a handsome bouquet.

Azurea Grandiflora. A Rocky Mountain native growing from 3 to 4 feet tall, producing, during August and September, pretty blue flowers in greatest profusion.

Farinacea. Beautiful light pale blue.

SCABIOSA - Pincushion Flower;

Mourning Bride

Very handsome border plants, which in any moderately good garden soil, produce a succession of flowers from June until frost, that are very serviceable for cutting purposes.

Caucasica (Blue Bonnet). Lovely heads of soft lilac-blue flowers prized for cutting. 1 foot to 18 inches. (Biennial). **Strong plants, 35c each; \$3.50 per doz.**

Japonica. A handsome Japanese species with clear blue flowers. 2 to 3 inches across, produced on good long stems. 3 feet.

SEDUM - Stonecrop

Easily grown hardy plants especially useful for rocky, barren soil.

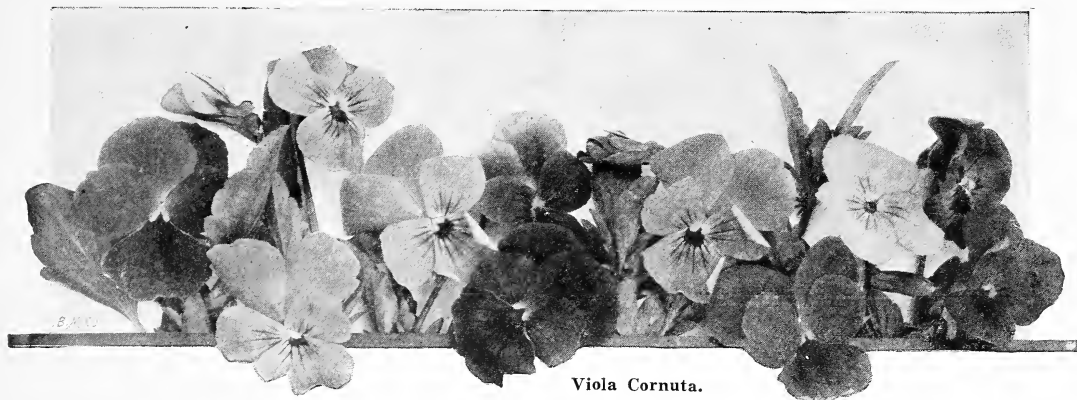
Spectabile. An erect-growing species with broad, thick, light green foliage and heads of soft rose-colored flowers.

Atropurpureum. Foliage of a dark coppery-purple shade; showy heads of rosy red flowers.

Acre (Golden Moss). Very dwarf. Foliage bright green; flowers yellow.

Spurium. Dwarf creeper, with attractive pink flowers; good rock plant.

PRICES for strong field-grown plants of all varieties listed on this page except where otherwise noted: 15c each; \$1.50 per doz. Not less than three of a kind at the dozen rate.



Viola Cornuta.

HARDY PERENNIAL PLANTS—Continued.

SIDALCEA - Greek Mallow

Erect growing plants that will succeed in any garden soil. Fine for cutting.

Rose Queen. Beautiful new variety remarkable for its graceful spikes of rose-pink flowers, resembling larkspur in appearance. June-July.

SPIRAEA - Goat's Beard; Meadow Sweet

Elegant border plants with feathery plumes of flowers and neat attractive foliage; succeed best in a half shaded location in rich, moist soil.

Filipendula (Dropwort). Numerous corymbs of white flowers on stems 15 inches high, during June and July, and pretty fern-like foliage.

Ulmaria, fl. pl. (Meadow Sweet). Grows about 3 feet high, and produces its double white flowers during June and July. 25c each; \$2.50 per doz.

STACHYS - Woundwort

A splendid edging plant for situations requiring strong foliage contrasts.

Lanata. The dense-growing plant is a sheen of silvery white, the leaves having the substance and woolly surface of felt. Small spikes of light purple flowers appear in July and August.

STATICE - Sea Lavender

Latifolia. A valuable and handsome plant with tufts of leathery leaves. Immense heads of light blue, minute flowers, fine for cutting, and if cut and dried last in perfect condition for months. July and August. 1½ feet. 20c each; \$2.00 per doz.

VALERIANA

The Valerian is an old time garden favorite. Hardy and of the easiest culture.

Alba. Pure white flowers borne in clusters. Fine for cutting.

Rubra. Showy heads of reddish pink flowers, in long, upright, dense panicles. These are excellent for bouquets as well as for edging. June to October.

VERONICA - Speedwell

A popular and much used group of perennials for the hardy garden. The taller varieties are desirable for the border and the low, spreading sorts make ideal plants for edging or the rock garden.

Longifolia subsessilis. A pretty variety with blue flowers produced on spikes a foot long. Comes into bloom in July and continues for a month. 3 feet. 20c each; \$2.00 per doz.

Incana. 1 foot. Short spikes of amethyst blue flowers, foliage silvered. 20c each; \$2.00 per doz.

Rupestris Blue. A little rock plant not over 4 inches high, with densely matted foliage clouded over with bright blue flowers. 20c each; \$2.00 per doz.

Rupestris Pink. Same as above but with pink flowers. 20c each; \$2.00 per doz.

Spicata. 18 inches. June and July. Long spikes of violet-blue flowers.

Rosea. 2 feet. June to September. Much-branched variety with pink flowers.

VIOLA CORNUTA - Tufted Pansy

The perennial everblooming Pansy. Smaller than the Pansy, but are constantly in full bloom from earliest Spring till hard frosts. Invaluable in the hardy border.

Geo. Wermig. Small dark violet flowers on long stems, a veritable sheet of bloom the whole season.

We can also supply the following named colors of Violas:

Blue Perfection.

White Perfection.

Mauve Queen.

Yellow Queen.

VIOLETS

Every garden should contain a few clumps of Violets. They are perfectly hardy and bloom early in the Spring.

Gov. Herrick. Large deep purple, sweet-scented flowers. Suitable for forcing under glass. 20c each; \$2.00 per doz.

VINCA - Myrtle

Minor. Fine evergreen creeper. Largely used for ground-cover in shady places where grass will not grow. Much used for covering graves. Single light blue flowers in June and July. Strong field roots. 20c each; \$2.00 per doz.

PRICES for strong field-grown plants of all varieties listed on this page except where otherwise noted: 15c each; \$1.50 per doz. Not less than three of a kind at the dozen rate.

Roses

Roses are a general favorite with all and no garden is quite complete without a planting of this popular plant. They lend themselves admirably to landscape decoration and furnish a wonderful supply of flowers for cutting. Roses require a sunny situation and should not be planted in the shade of trees or buildings. To do their best Roses should be properly cut back before planting and on all Spring shipments we send the plants out, all pruned ready to plant out. H. P. stands for the Hybrid Perpetual or "June" Rose; H. T. the Hardy Tea or "Everblooming" type.



Paul Neyron Rose.

Baby Rambler, Erna Teschendorf. In our opinion this is the best of the Baby Rambler group. Flowers are perfectly double, borne in large clusters. Its color is a rich crimson which does not fade.

Conrad Ferd. Meyer (Rugosa). Glossy green foliage with fragrant, large delicate pink, cup-shaped flowers. Blooms early.

Baron de Bonstetten (H. P.) Velvety blackish crimson color. Large bloom. Hardy strong grower. Rich and fragrant.

Eugene Furst (H. P.) The best "red" in its class. A dazzling scarlet-crimson toned with maroon. Long blooming period. Large and fragrant. Healthy, disease resistant foliage.

Frau Karl Druschki (H. P.) "White American Beauty," "Snow Queen." The greatest white Hybrid Perpetual ever introduced. Long pointed buds opening into an extra large, pure paper-white bloom. Attractive glossy green foliage. Its long blooming period is remarkable as it blooms profusely from June until frost.

Geo. Ahrends (H. P.) This is the new "Pink Druschki," almost as popular as Frau Karl Druschki which it much resembles in form of flower and habit of growth. Long stems topped with lovely, rich pink, large blooms.

Gruss an Teplitz (H. T.) Intense rich crimson-red. Continuous bloomer.

Killarney (H. T.) Long pointed buds. Flowers intensely fragrant. A pretty shade of shell-pink. Everblooming.

Mad. Butterfly (H. T.) An ideal kind for cutting. Buds a rich Indian-red, opening into a pleasing combination of white, pink, apricot and gold.

Magna Charta (H. P.) Strong growing, early flowering pink.

Mrs. J. H. Laing (H. P.) A constant bloomer. Long pointed buds on strong stems. Fragrant. Soft pink color.

Paul Neyron (H. P.) Large flowers 4 to 6 inches across, of bright ruddy pink. Stems thornless. In bloom from June until September.

White Killarney (H. T.) A pure white sport of Killarney. Long pointed buds and large open flowers. Extra good.

Climbing Roses

Produce a beautiful effect when trained to grow upon a trellis or over a pergola. Fine when planted around the porch.

American Pillar. Clusters of large carmine-rose flowers with yellow centers.

Doctor Van Fleet. Delicate flesh white flowers, borne in clusters. Stems 12 to 18 inches long, fine for cutting.

Dorothy Perkins. A popular shell-pink variety.

Hiawatha. Deep ruby-red flowers with white eye. One of the prettiest of the climbers.



Frau Karl Druschki Roses.

PRICES, strong field-grown plants of all varieties listed on this page, pruned ready to plant, 75c each; \$7.00 per 10, postpaid. Extra heavy plants by express, not prepaid, \$1.00 each.



A Section of the Bulb Cellar at Goodhold.

How to Grow Gladioli

The Gladioli can be successfully grown on any soil that will produce any of our ordinary garden crops. The bulbs should be planted in the open and not under trees, or among shrubbery. The ground should be thoroughly pulverized and given a coating of well-rotted manure or a sprinkling of a balanced commercial fertilizer; fresh stable manure may be worked into the ground the previous Fall, it is unsafe to apply it in the Spring just before planting.

Planting can be done in April, after frost is out of the ground, all danger from frost will be past by the time growth reaches above ground. By planting at intervals up to about July 1st, it will be possible to have a succession of flowers from July until frost.

When a certain color scheme is to be carried out or if flowers of one color are desired for cutting, named varieties must be used. Any of our well balanced mixtures will always give satisfaction for ordinary garden use. The average time for bulbs to produce flowers is from eighty to ninety days from time of planting.

The bulbs may be planted from three to five inches deep and this same distance apart in the row. In garden culture, a good plan is to plant three rows one foot apart, skipping a row and then plant three more rows, thus leaving a path two feet wide between each block. When only a few are used they can be planted with a trowel, in open spaces between other plants in the border or in groups, giving the bulbs the usual spacing. The only attention required until flowering time is to keep the ground well stirred and free from weeds.

After the flower spikes appear, the plants should not at any time suffer from the lack of water. Liquid manure may be used freely, if this is not obtainable or is considered objectionable, an occasional application of Nitrate of Soda may be used; about one teaspoonful to one gallon of water. Care should be taken not to wet the leaves with this solution. Pulverized sheep manure, which can usually be obtained from your local dealer, is always a good and safe fertilizer.

The flower spikes are best cut at the time when not more than three blooms are open. The ends of the stalks should be cut off an inch or so and the water in the vase renewed daily. Removing the terminal buds by pinching off the tip end of the spike, arrests stalk development and produces larger and better flowers from the earlier maturing buds. The stalks should never be cut off near the ground; not less than three leaves should be left, they are essential to the growth that produces the new bulb.

The bulbs may be harvested at any time before frost and stored in paper bags or boxes. Roots and old bulbs at the bottom should be removed after the bulbs have become dry. Any cellar that will carry over potatoes in good condition, will be found to be a suitable place for Gladioli bulbs.

The Goodhold Floral Gardens Co.

MENTOR, OHIO.



DELPHINIUMS IN THE HARDY BORDER

THE
GOODHOLD FLORAL GARDENS CO.
MENTOR, OHIO